

# Firmware Upgrade Guide

## for CD-MT512 DMX Addressing Tool

### Step 1:

Connect the Addressing tool to the computer via USB cable.

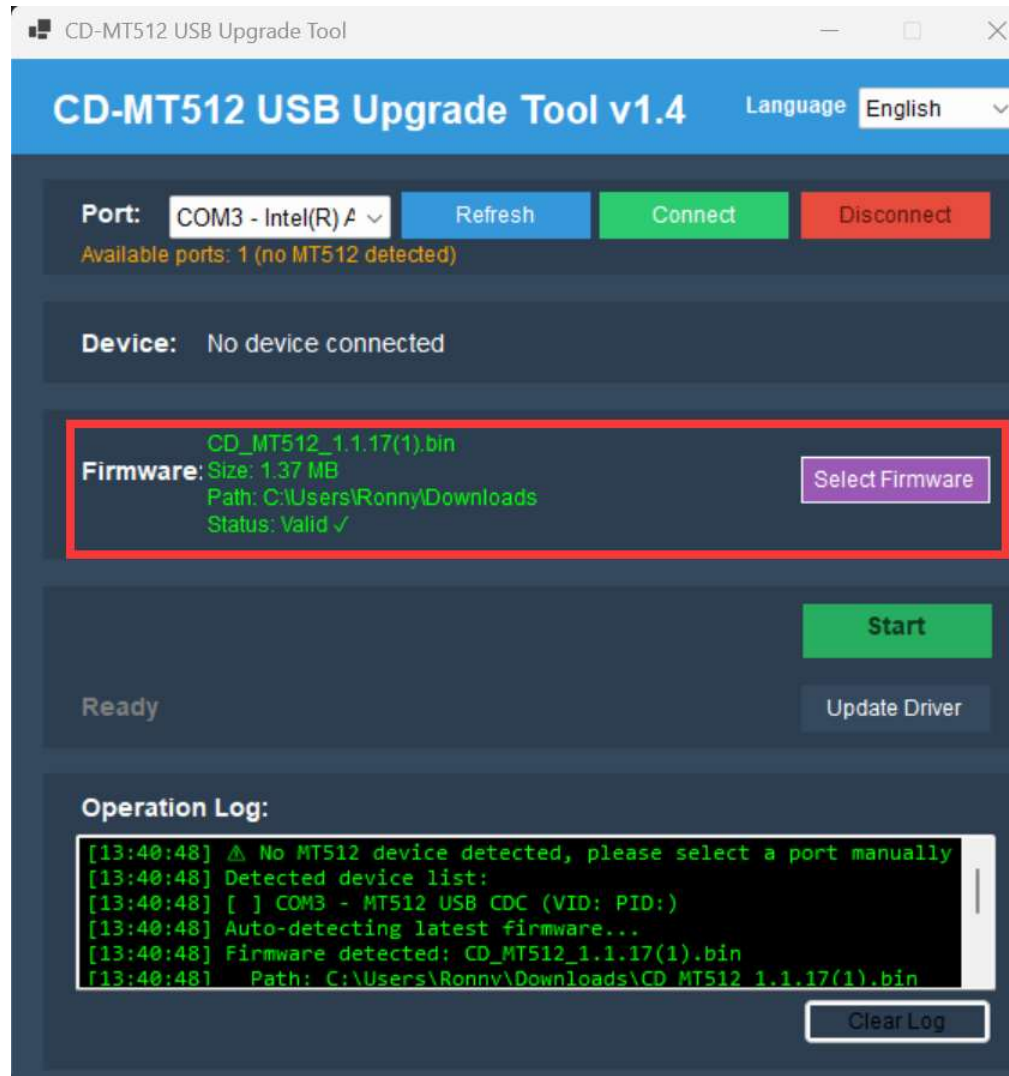
### Step 2:

名称	修改日期	类型	大小
今天			
Readme	2026/6/17 13:32	文本文档	0 KB
今年的早些时候			
MT512_DFU_TOOL.dll	2026/4/26 0:08	应用程序扩展	136 KB
<b>MT512_DFU_TOOL</b>	2026/4/26 0:08	<b>应用程序</b>	136 KB
MT512_DFU_TOOL.pdb	2026/4/26 0:08	PDB 文件	51 KB
MT512_DFU_TOOL.deps.json	2026/4/13 21:27	JSON 文件	17 KB
MT512_DFU_TOOL.runtimeconfig.json	2026/4/13 21:27	JSON 文件	1 KB
esptool	2026/3/8 22:46	应用程序	12,385 KB
config.json	2026/2/1 19:57	JSON 文件	1 KB
firmwarefile	2026/4/26 0:03	文件夹	
runtimes	2026/4/26 0:01	文件夹	
很久以前			
System.IO.Ports.dll	2025/11/19 23:28	应用程序扩展	36 KB
System.Management.dll	2025/10/24 8:20	应用程序扩展	72 KB
System.CodeDom.dll	2025/10/24 8:14	应用程序扩展	180 KB

Run the program 'MT512 DFU TOOL' as administrator

### Step 3:

Select the firmware you need to update.



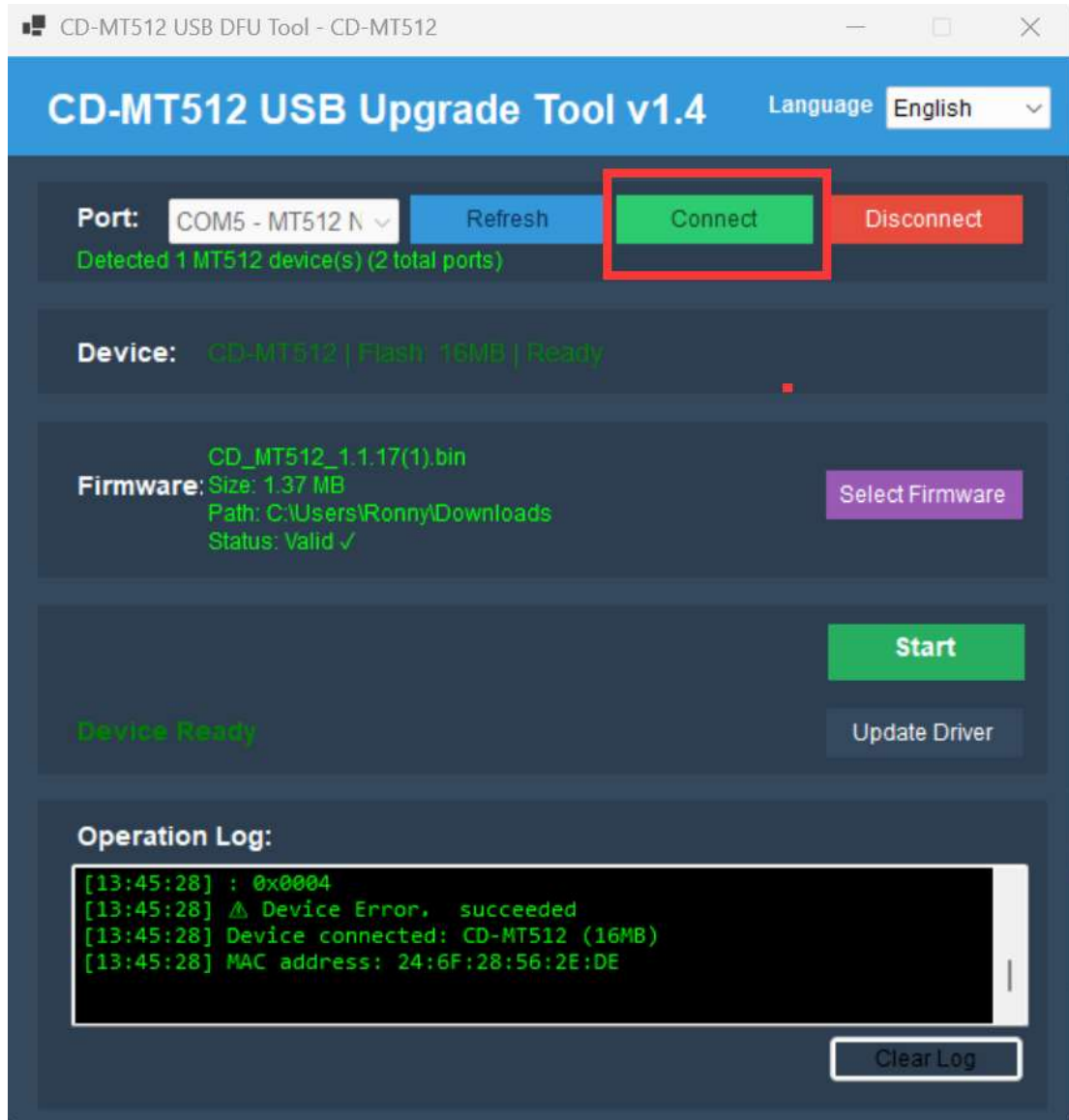
## Step 4:

Klik "Update driver" as below:



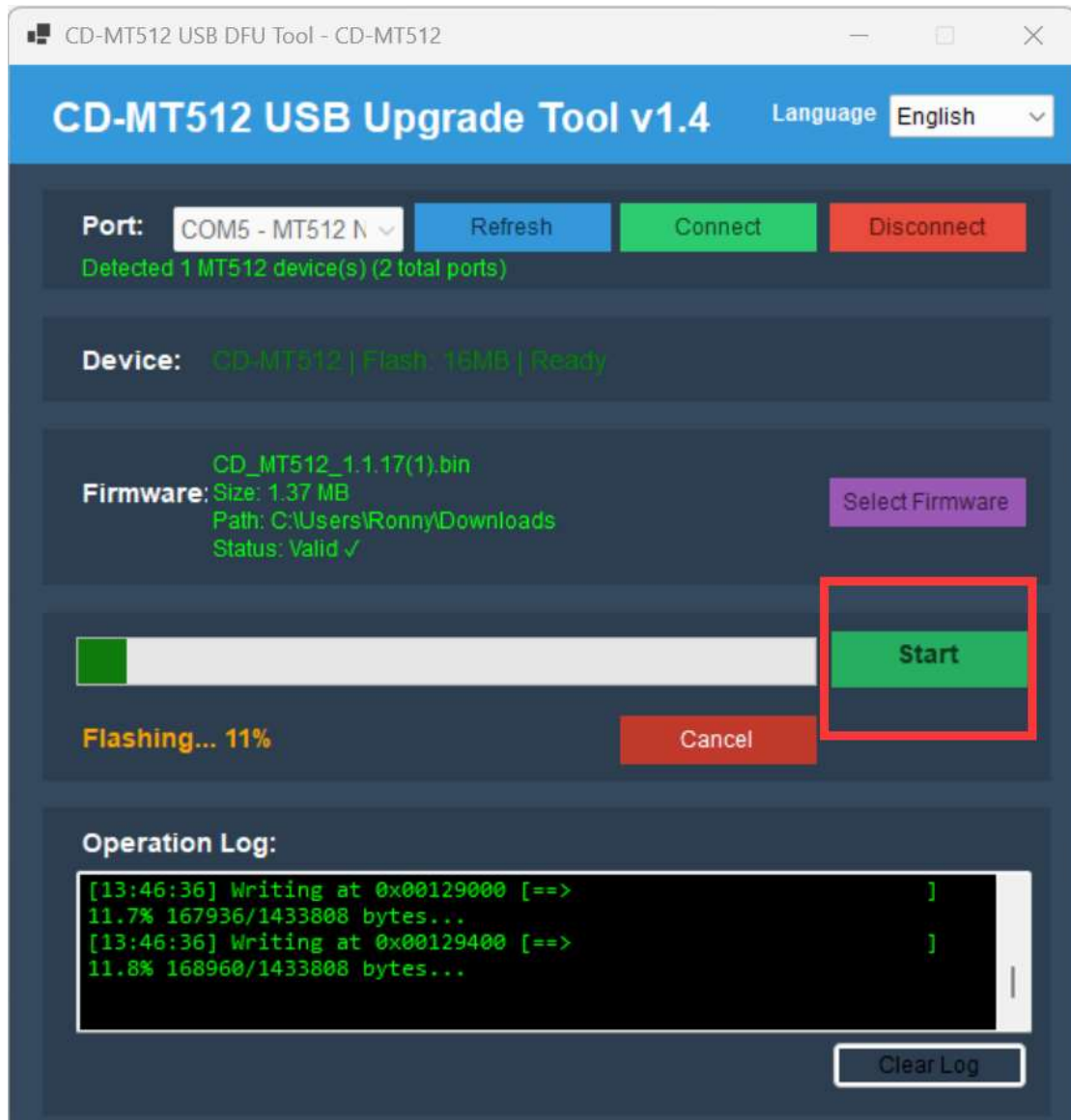
## Step 5:

Do connection between CD-MT512 addressing tool to your PC



## Step 6:

Click "Start" to Start Upgrade



## Step 7:

When the interface displays as shown in the figure, the update is completed.

